

**RSA CONFERENCE 2014**

FEBRUARY 24 - 28 | MOSCONE CENTER | SAN FRANCISCO

Share.  
Learn.  
Secure.

Capitalizing on  
Collective Intelligence

# COGNITIVE INJECTION

## Reprogramming the Situation-Oriented Human OS

SESSION ID: HUM-T09

Andy Ellis  
CSO  
Akamai  
@csoandy



# Why do people make “bad” decisions?



# Flashback: Risk Compensation



# Flashback: Risk Compensation

PERCEIVED RISK

RISK REDUCTION



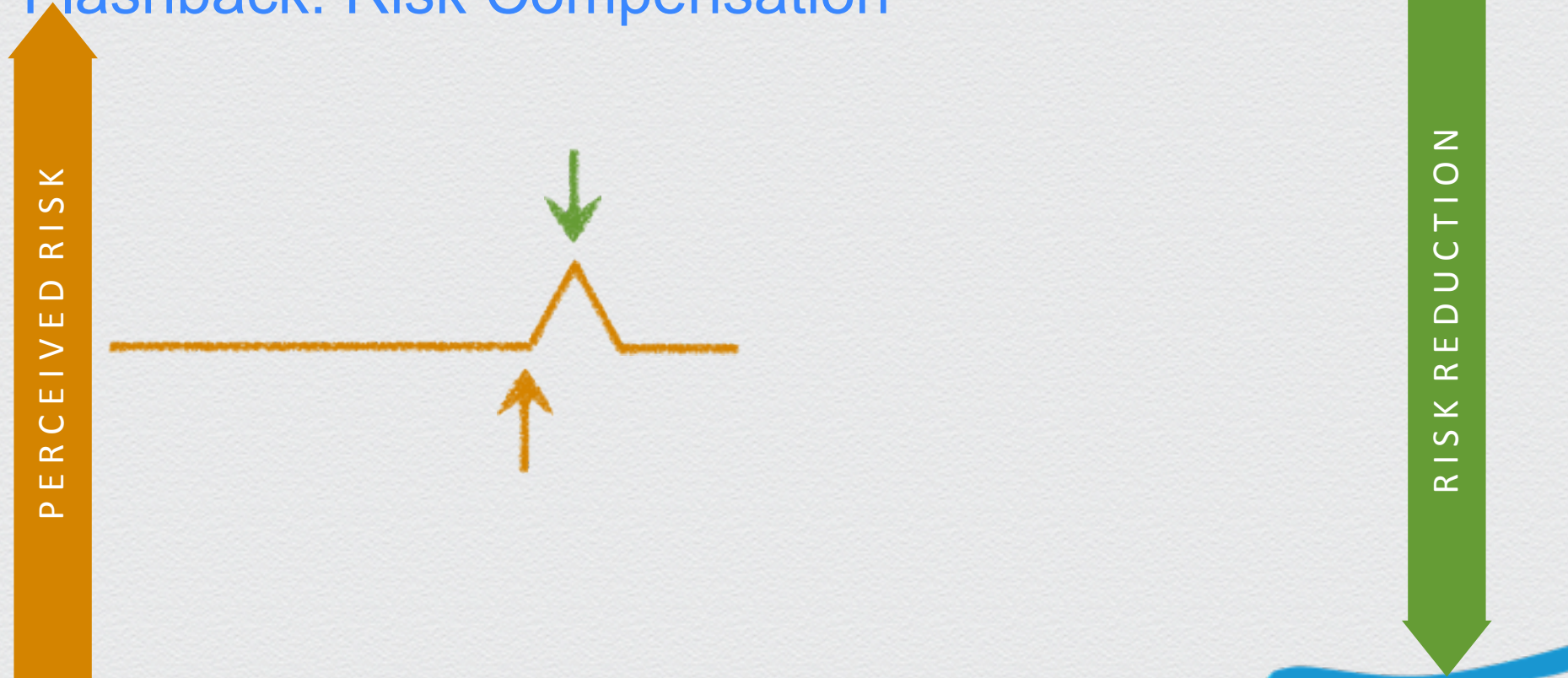
# Flashback: Risk Compensation

PERCEIVED RISK



RISK REDUCTION

# Flashback: Risk Compensation



# Flashback: Risk Compensation

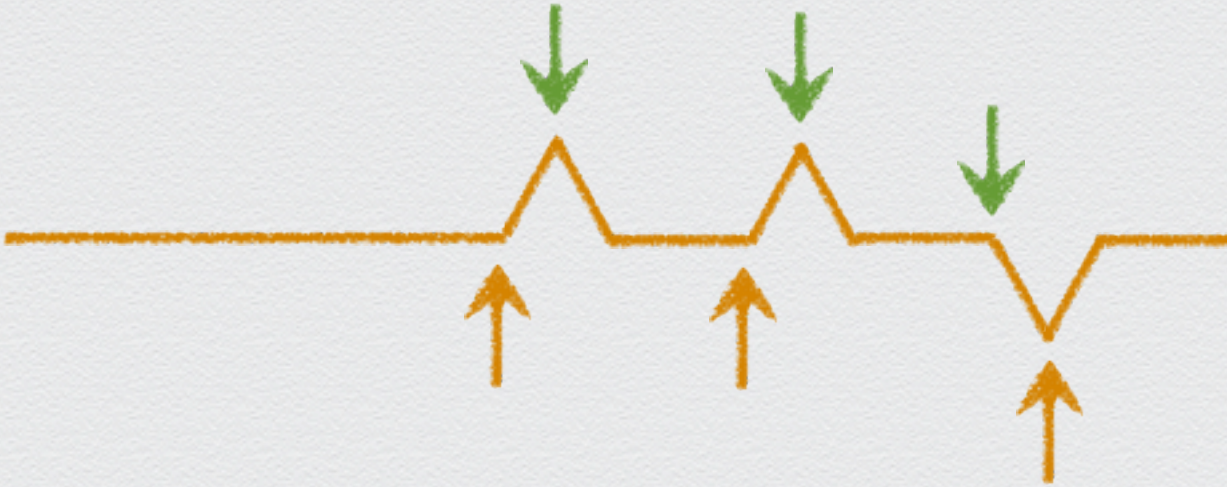
PERCEIVED RISK



RISK REDUCTION

# Flashback: Risk Compensation

PERCEIVED RISK



RISK REDUCTION



# Historical paranoia

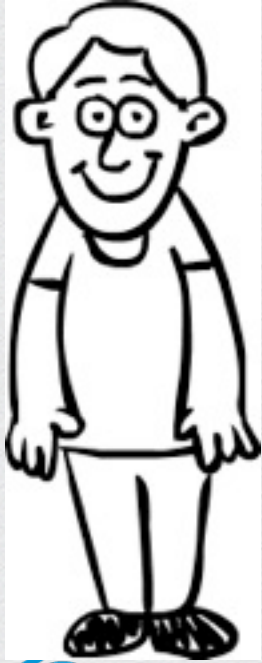


# Dilemma of the Prisoner's Dilemma

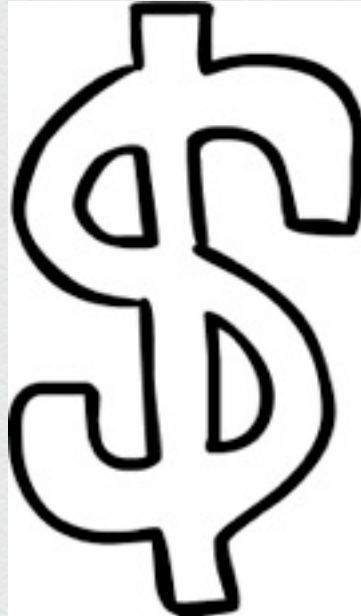
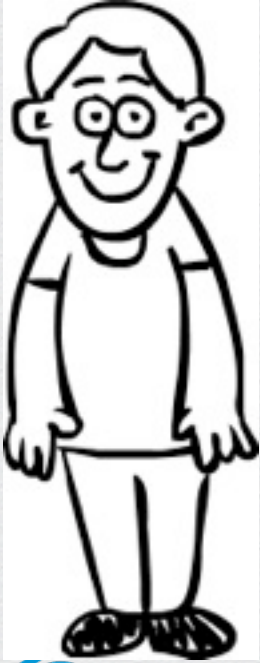
# Dilemma of the Prisoner's Dilemma



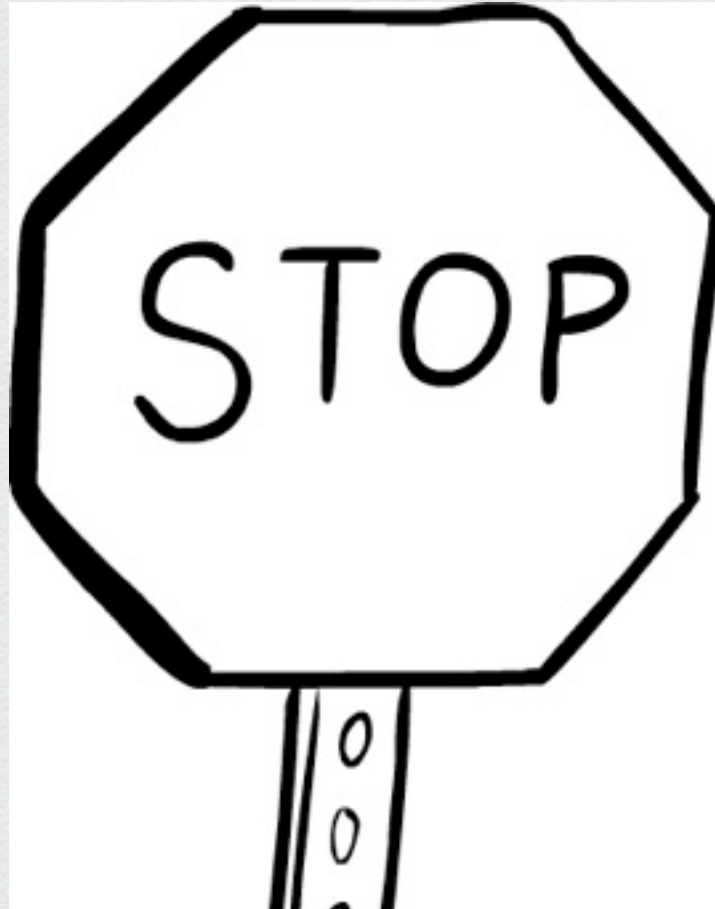
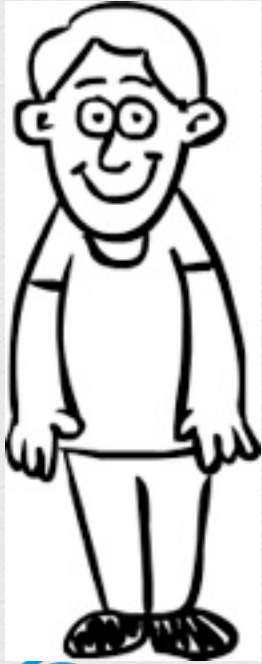
# Dilemma of the Prisoner's Dilemma



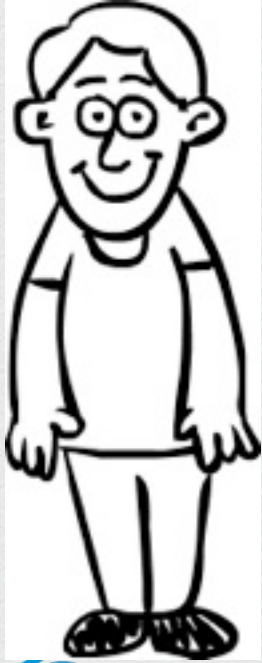
# Dilemma of the Prisoner's Dilemma



# Dilemma of the Prisoner's Dilemma



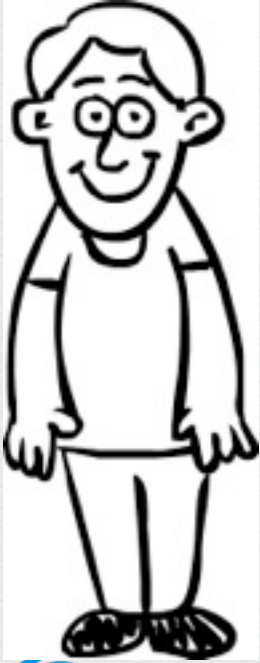
# Dilemma of the Prisoner's Dilemma




# Dilemma of the Prisoner's Dilemma

Cooperate

Cheat

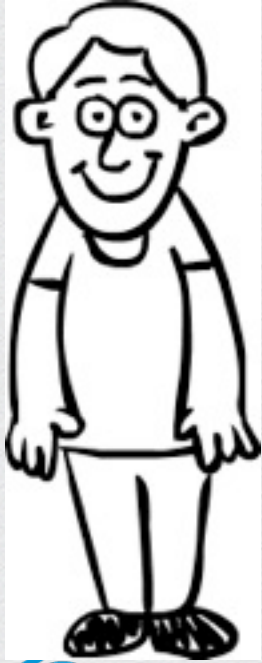





# Dilemma of the Prisoner's Dilemma

Cooperate

Cheat



Cooperate

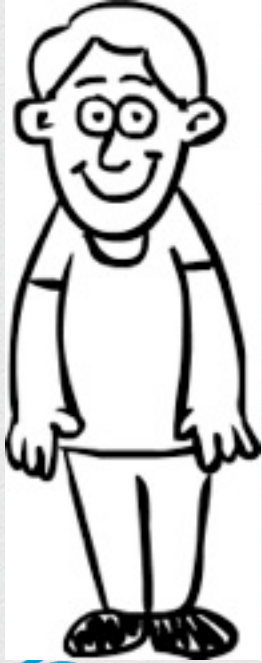
Cheat




# Dilemma of the Prisoner's Dilemma

Cooperate

Cheat



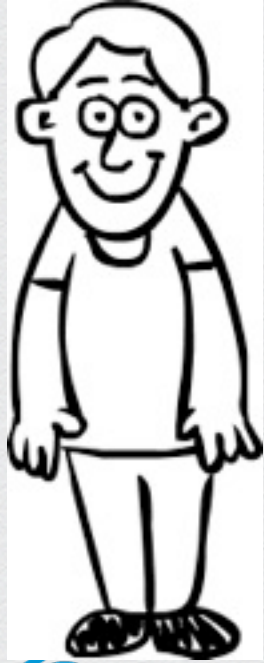
Cooperate

-3

Cheat

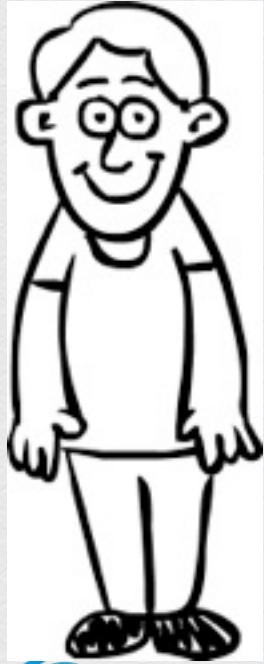


# Dilemma of the Prisoner's Dilemma



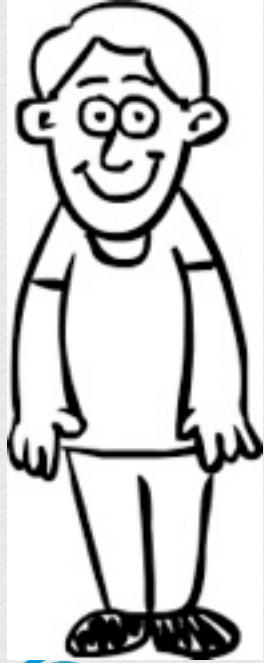
	Cooperate	Cheat
Cooperate	-3	
Cheat	-10	

# Dilemma of the Prisoner's Dilemma



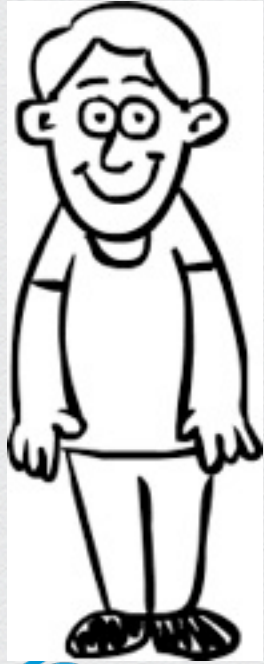
	Cooperate	Cheat
Cooperate	-3	-1
Cheat	-10	

# Dilemma of the Prisoner's Dilemma



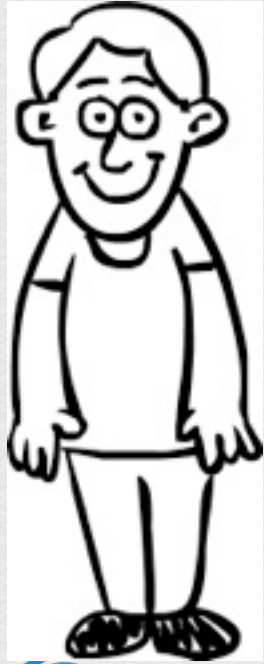
	Cooperate	Cheat
Cooperate	-3	-1
Cheat	-10	-5

# Dilemma of the Prisoner's Dilemma

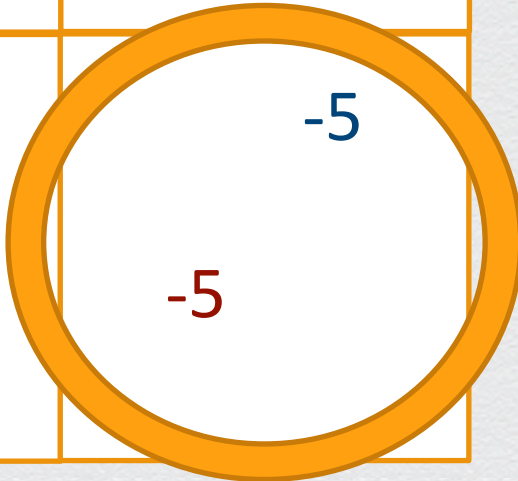


	Cooperate	Cheat
Cooperate	-3, -3	-1, -10
Cheat	-10, -1	-5, -5

# Dilemma of the Prisoner's Dilemma



	Cooperate	Cheat
Cooperate	-3, -3	-1, -10
Cheat	-10, -1	-5, -5



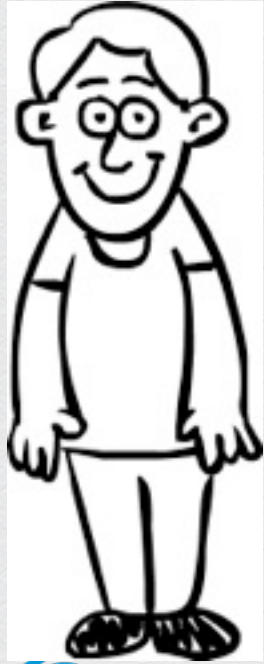
2/3 of the time!



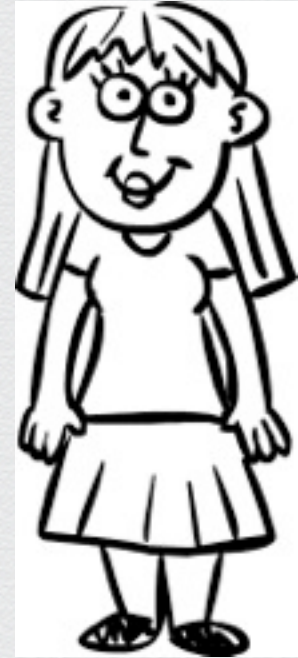
#RSAC

RSACONFERENCE2014

# Dilemma of the Prisoner's Dilemma



	Cooperate	Cheat
Cooperate	-3, -3	-1, -10
Cheat	-10, -1	-5, -5



2/3 of the time!



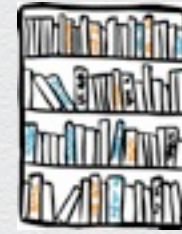
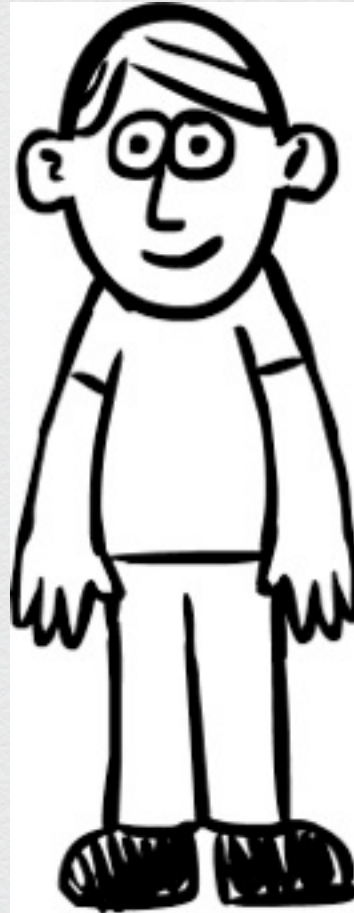
# Why do people make “bad” decisions?



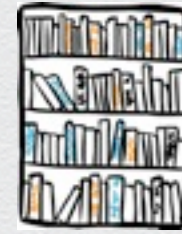
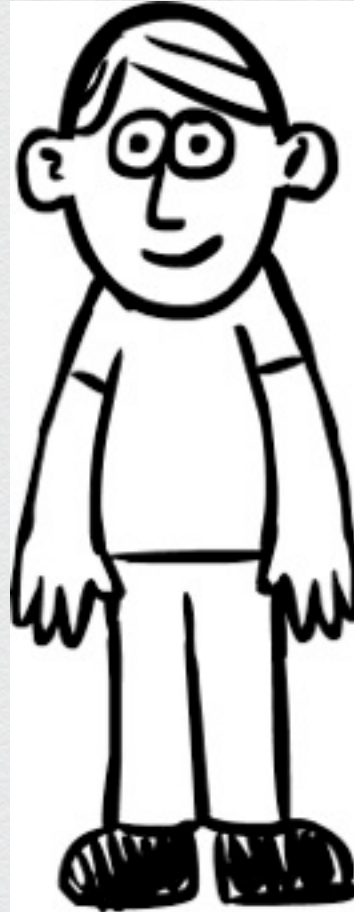
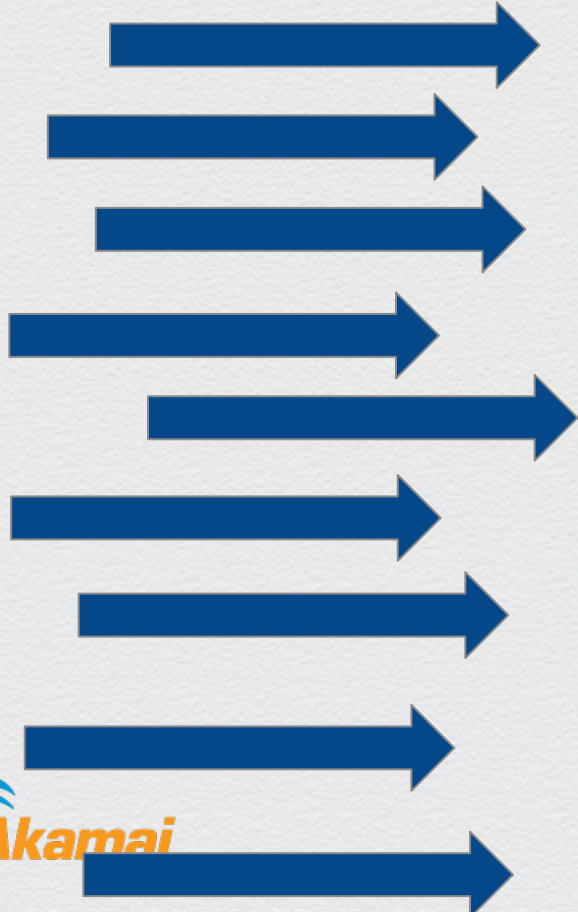
# Why do people make “bad” decisions?



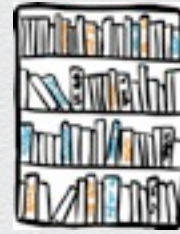
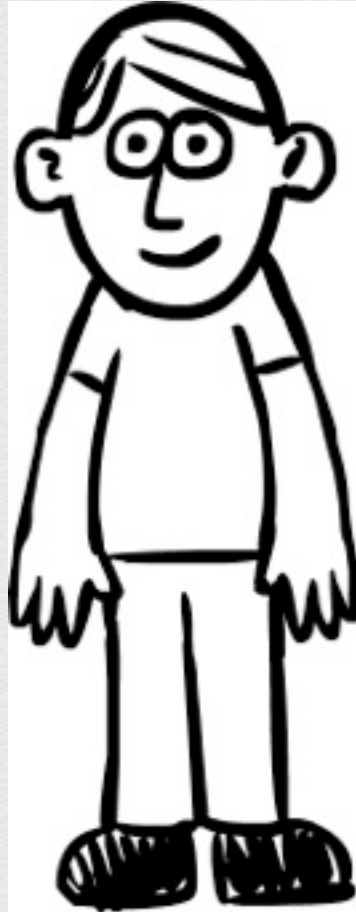
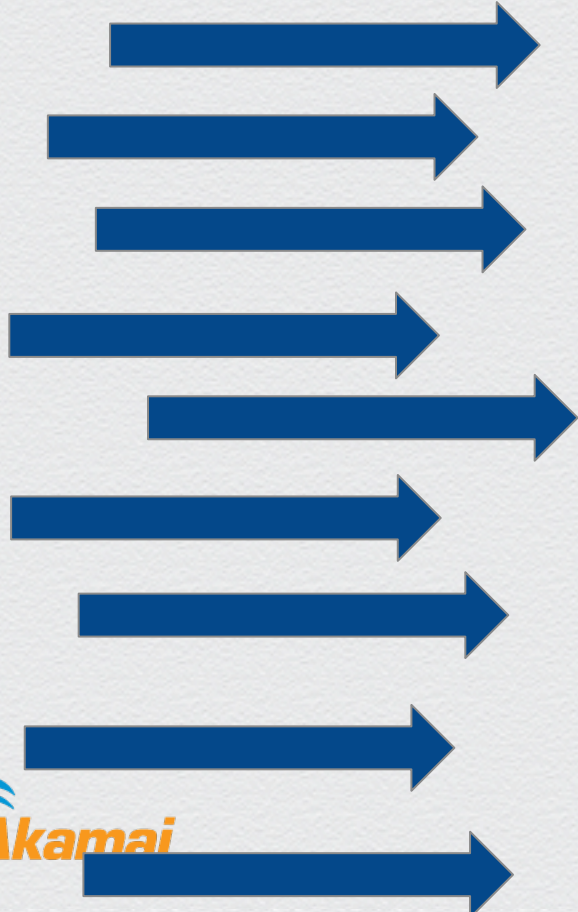
# System 1: The Fast, Lizard Brain



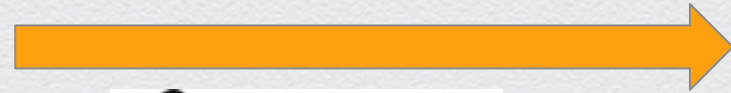
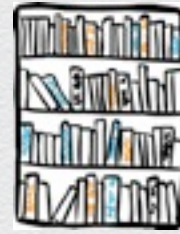
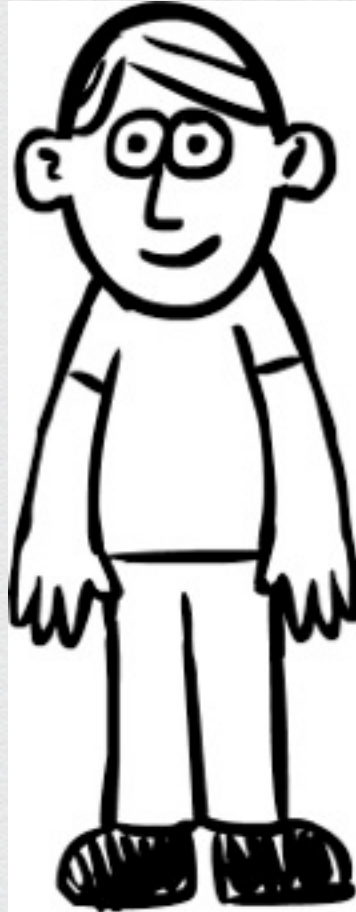
# System 1: The Fast, Lizard Brain



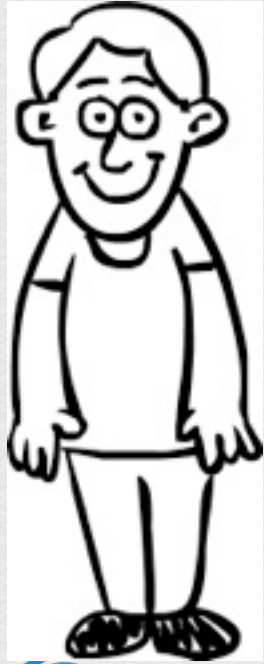
# System 1: The Fast, Lizard Brain



# System 1 thrives on stereotypes



# Dilemma of the Prisoner's Dilemma



	Cooperate	Cheat
Cooperate	-3, -3	-1, -10
Cheat	-10, -1	-5, -5



2/3 of the time!

# Dilemma of the Prisoner's Dilemma

	Cooperate	Cheat
Cooperate	-3, -3	-1, -10
Cheat	-1, -10	-5, -5



# Dilemma of the Prisoner's Dilemma

Cooperate

Cheat

Cooperate

-3

-1

-3

-10

Cheat

-10

-5

-1

-5



# Dilemma of the Prisoner's Dilemma

2/3 of the time! Cooperate

Cheat



	Cooperate	Cheat
Cooperate	-3	-10
Cheat	-10	-5



# Dilemma of the Prisoner's Dilemma



# Dilemma of the Prisoner's Dilemma



# System 2: Active processing



# System 2: Active processing

LEFT

# System 2: Active processing

LEFT

RIGHT

# System 2: Active processing

LEFT

RIGHT

LEFT



# System 2: Active processing

LEFT

RIGHT

LEFT

RIGHT

# System 2: Active processing

LEFT

RIGHT

LEFT

RIGHT

LEFT

# System 2: Active processing

LEFT

RIGHT

LEFT

RIGHT

LEFT

RIGHT

# System 2: Active processing

LEFT

RIGHT

LEFT

RIGHT

LEFT

RIGHT

LEFT

# System 2: Active processing

LEFT

RIGHT

LEFT

RIGHT

LEFT

RIGHT

LEFT

RIGHT



# System 2: Active processing



# System 2: Active processing

LEFT

# System 2: Active processing

LEFT

LEFT



# System 2: Active processing

LEFT

LEFT

LEFT

# System 2: Active processing

LEFT

LEFT

LEFT  
RIGHT

# System 2: Active processing

LEFT

LEFT

RIGHT

LEFT

RIGHT

# System 2: Active processing

LEFT

LEFT

RIGHT

LEFT

RIGHT

LEFT

# System 2: Active processing

LEFT

LEFT

RIGHT

RIGHT

LEFT

RIGHT

LEFT

# System 2: Active processing

LEFT

LEFT

RIGHT

RIGHT

RIGHT

LEFT

RIGHT

LEFT

# Why do people make “bad” decisions?



# Why do people make “bad” decisions?





# Why do people make “bad” decisions?



# Why do people make “bad” decisions?



# The Schemata of System 1



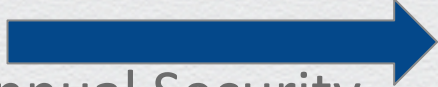
# The Schemata of System 1

Annual Security Awareness Training is required by all employees to ensure your compliance with the security policies of the company while conducting your daily tasks in furtherance of our goals to protect company data, systems, and information against malfeasance, adversarial action, and other systemic failures that might be introduced by an inattention to appropriate risk management activities or non-compliance with industry standard best practices as laid out in various control frameworks such as ISO 27002, PCI, HIPAA, SOX, SSAE-16, NIST 800-53, FedRAMP...



# The Schemata of System 1

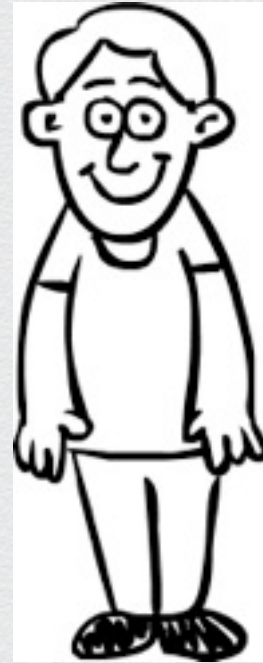
Annual Security Awareness Training is required by all employees to ensure your compliance with the security policies of the company while conducting your daily tasks in furtherance of our goals to protect company data, systems, and information against malfeasance, adversarial action, and other systemic failures that might be introduced by an inattention to appropriate risk management activities or non-compliance with industry standard best practices as laid out in various control frameworks such as ISO 27002, PCI, HIPAA, SOX, SSAE-16, NIST 800-53, FedRAMP...



# What can you do?



# What can you do?



# New rules to the attention-starved





# New rules to the attention-starved



# New rules to the attention-starved



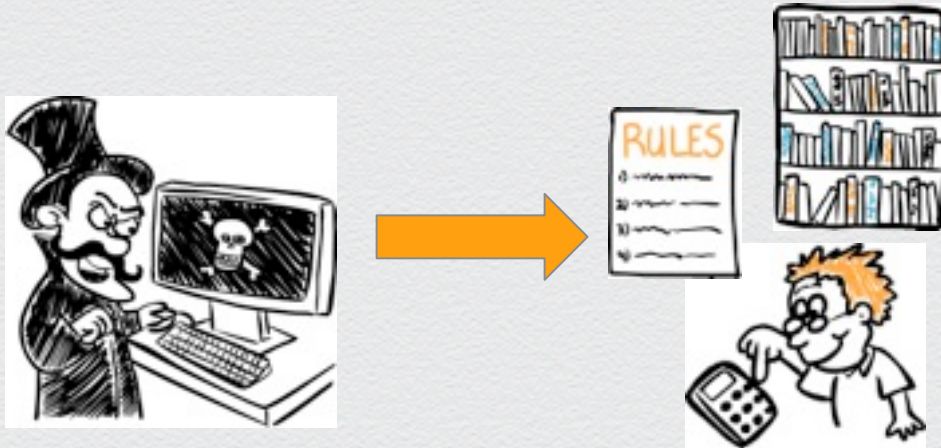
# New rules to the attention-starved



# Don't model business partners as adversaries



# Don't model business partners as adversaries



# Don't model business partners as adversaries





**RSA CONFERENCE 2014**

FEBRUARY 24 - 28 | MOSCONE CENTER | SAN FRANCISCO

**Further Reading:**

**@csoandy**

**[www.csoandy.com](http://www.csoandy.com)**